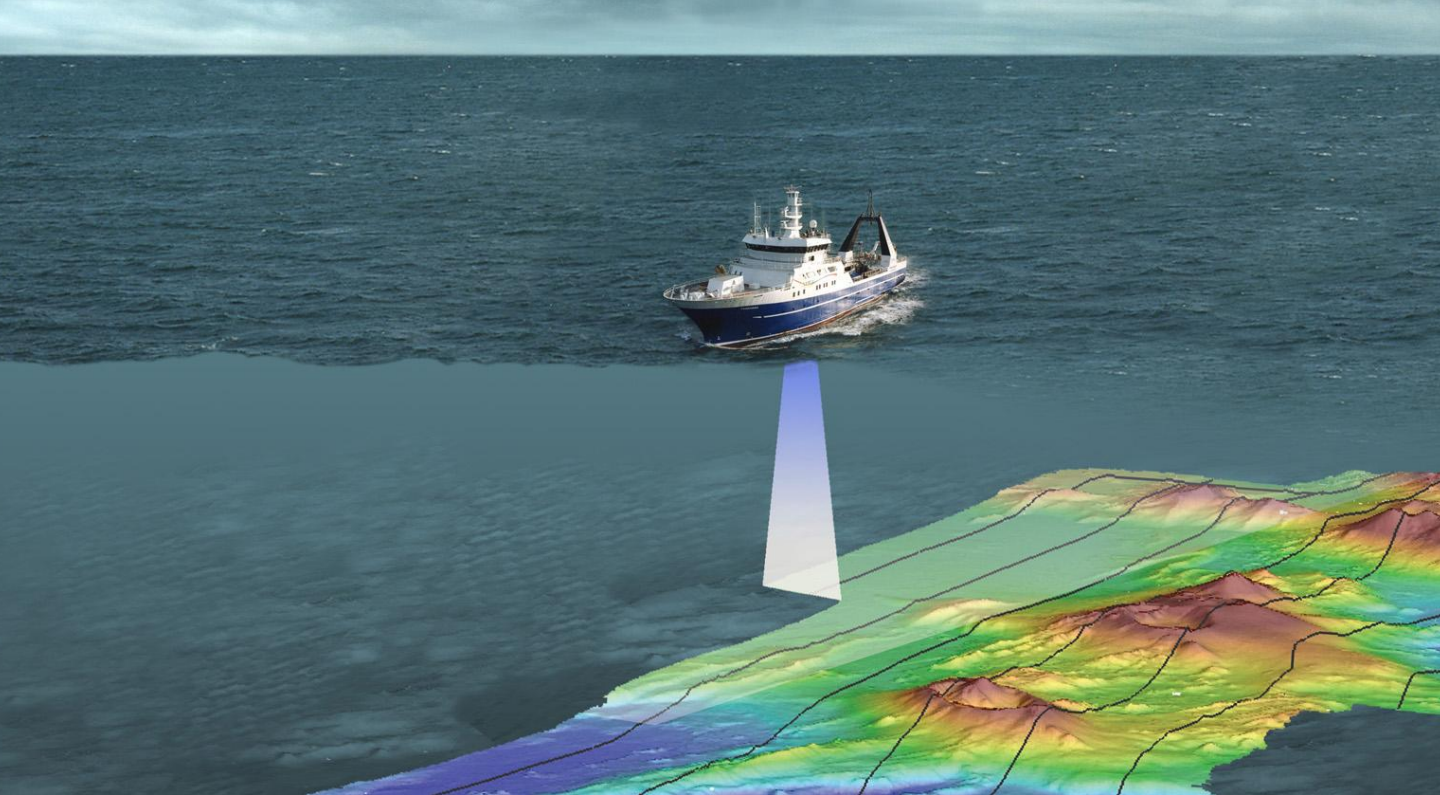




Geophysical & Geotechnical surveys in the Oil and Gas Industry



We provide turnkey subsea construction solutions, including:

- **Diving**
- **ROV**
- **Survey Services**
- **Inspection Maintenance and Repair**
- **Engineering**
- **Topside Rope Access Services**
- **MPSV/ DSV Charter & Management**

About Us

NDE Offshore is a Swedish offshore and onshore service provider. The company was founded in 2005 and has carried out projects in Sweden, Europe, and the Middle East.

NDE Offshore's corporate headquarters is in Dubai (United Arab Emirates). We have operational bases in Sweden, in Saudi Arabia, and storage & service facilities in Malta.

NDE Offshore has a solid track record of statutory inspections above and below the water, installation, and retrofit works, periodic maintenance, construction support, and surveys.

We have completed combined offshore and onshore campaigns where we carry out topside and subsea work simultaneously.

Our main business areas are the Oil & Gas industry. Our clients include EPC contractors, international and local operators, engineering companies, shipyards, and onshore and offshore drilling contractors.

Company Locations



We will help you get an overview of the aspects of the seabed before you deploy a subsea installation

- **Geophysical Survey**
- **Geotechnical Survey**
- **Hydrographic Surveys**
- **Construction Support Services**
- **ROV Surveys and Inspections**
- **Laboratory and Geotechnical Data Delivery**
- **Vessels; DP2, Jack-up & Shallow Draft Vessel**





Geophysical Survey by NDE Offshore

NDE Offshore specializes in geophysical surveys to collect the precise data design engineers need for the successful installation of offshore structures, subsea cables, and pipelines. These surveys provide essential insights for informed project planning and execution.

Applications of Geophysical Survey Data:

1. Mapping Seabed Morphology and Sub-Seabed Conditions

Detailed depiction of the seabed's physical condition and the layers beneath it.

2. Profiling Geological Appearances

Identification and analysis of geological planning to support engineering design and ensure stability.

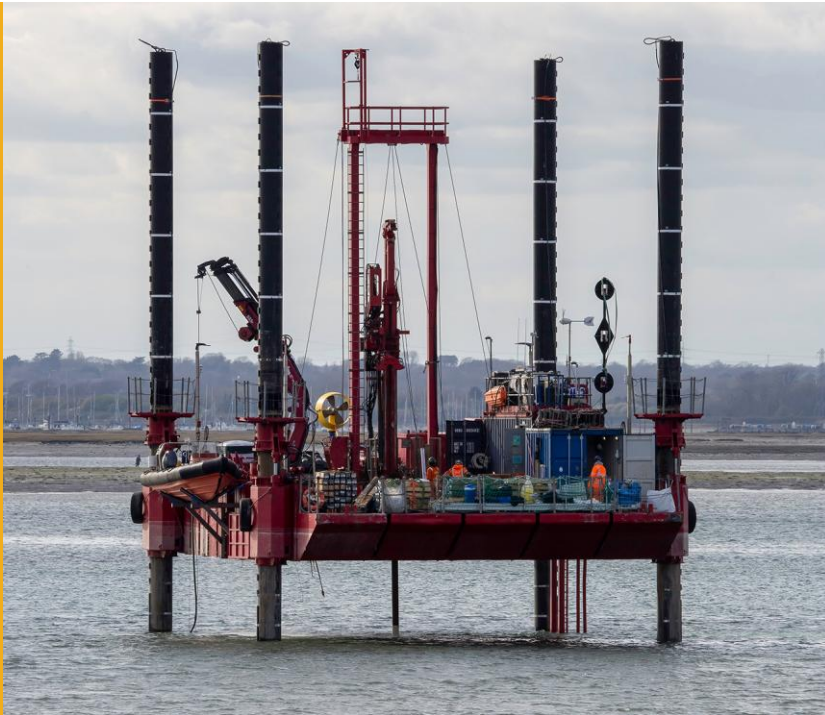
3. Geohazard Detection

Early identification of potential geohazards, such as faults or unstable sediments, to diminish risks during construction.

4. Reference for Geotechnical Investigations

NDE Offshore survey reports are a qualitative risk analysis tool for assessing the impact and likelihood of identified anomalies on the inspected platforms / subsea structures.

Geotechnical Survey



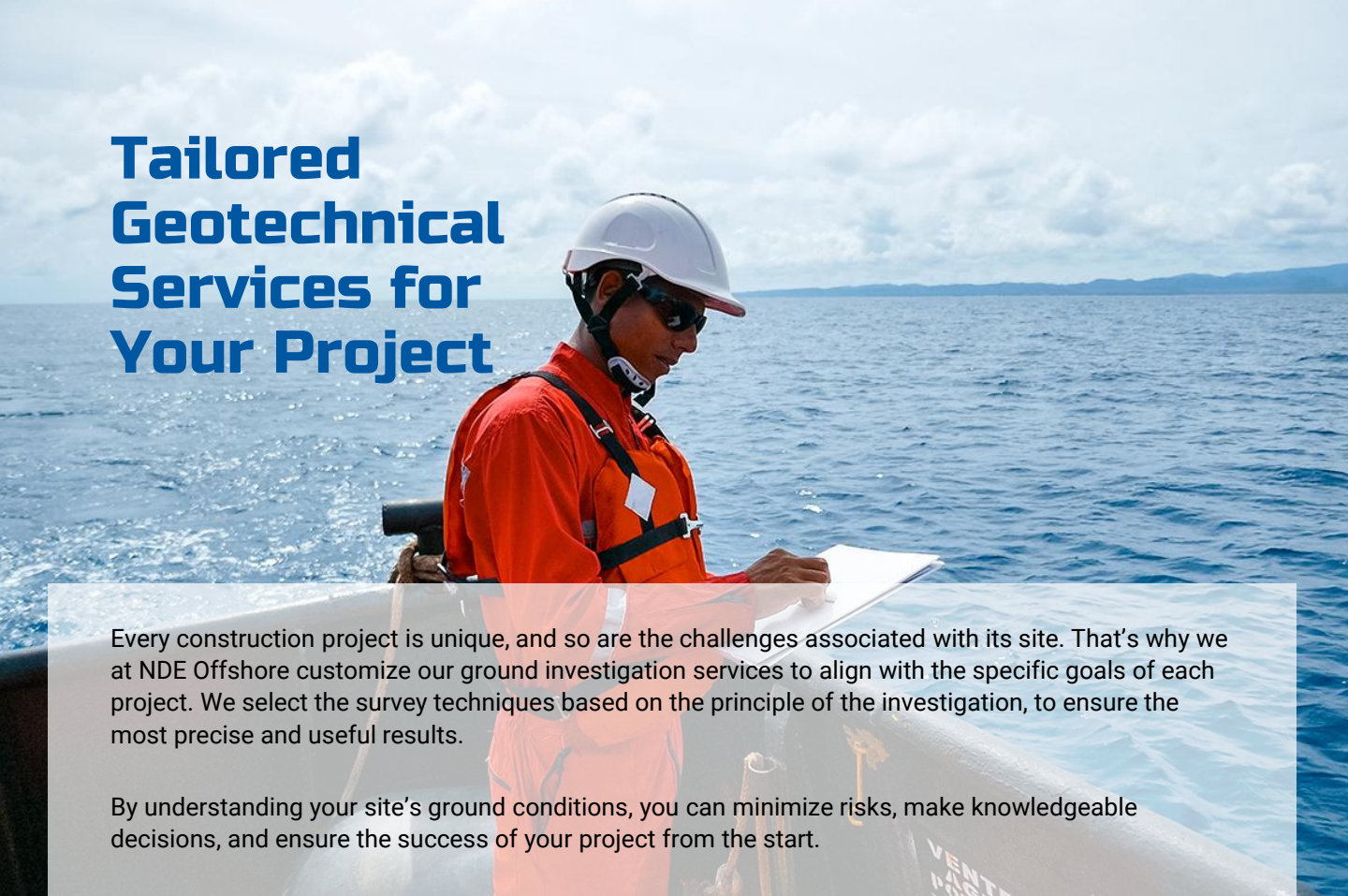
A shallow-water geotechnical jack-up platform is a specialized system designed for geotechnical investigations. NDE Offshore deploys expert teams equipped for core drilling and downhole cone penetration testing. The collected data is analyzed to identify subsurface risks, helping contractors and clients minimize ground-related uncertainties by providing reliable geotechnical design parameters.

Geotechnical Ground Investigations

Using advanced remote sensing technologies, we tailor our approach to suit the specific characteristics of each site. This ensures that we deliver solutions that are not only suitable and safe but also sustainable.

A ground investigation is a detailed method used to examine the conditions of a site's subsurface. It involves a range of techniques to gather essential information about the soil, rock, groundwater, and other geological features in the area.

Tailored Geotechnical Services for Your Project



Every construction project is unique, and so are the challenges associated with its site. That's why we at NDE Offshore customize our ground investigation services to align with the specific goals of each project. We select the survey techniques based on the principle of the investigation, to ensure the most precise and useful results.

By understanding your site's ground conditions, you can minimize risks, make knowledgeable decisions, and ensure the success of your project from the start.

NDE Offshore offers:

- Core sampling
- Laboratory testing
- 3D ground modeling
- Cone penetration tests
- Mechanical drillings
- Alignment-specific deepwater, nearshore, geotechnical investigations
- Geologic mapping

Hydrographic Surveys

NDE Offshore specializes in geophysical surveys to collect the precise data design engineers need for the successful installation of offshore structures, subsea cables, and pipelines. These surveys provide essential insights for informed project planning and execution.

Applications of Geophysical Survey Data:

1. Analyze the Seabed and Sub-Seabed Conditions

Detailed characterization of the seabed's physical shape and the layers beneath it.

2. Outlining Geological Features

Identification and analysis of geological structures to support engineering design and ensure stability.

3. Geohazard Detection

Early identification of potential geohazards, such as faults or unstable sediments, to eliminate risks during construction.

4. Reference for Geotechnical Investigations

Providing a foundational seabed and sub-seabed reference guide for further geotechnical investigations.

NDE Offshore delivers accurate and comprehensive geophysical data to be used as decision support when designing and installing critical offshore infrastructure. The data ensures that the project is safe, efficient, and successful.

Construction Support Services

NDE Offshore offers extensive construction support services to ensure the safe and efficient installation of offshore assets. Our approach relies on precise surface and subsea positioning data, enabling accurate placement and secure installation of both surface and subsurface assets.

Key Benefits of Our Construction Support:

- **Enhanced Accuracy:** Using advanced positioning technologies, we ensure offshore assets are installed exactly where they are needed.
- **Safety Focus:** Our methods prioritize safety during the installation process, minimizing dangerous risks to personnel and equipment.
- **Extensive Support:** From initial planning to final placement, we work closely with clients to meet project requirements.



Whether it's subsea pipelines, cables, or surface infrastructure, our construction support services deliver the precision and reliability needed for successful offshore asset deployment.

ROV Surveys and Inspections

NDE Offshore applies **Remotely Operated Vehicles (ROVs)** to perform detailed subsea inspections, mapping, and condition assessments of underwater assets. ROVs facilitate complex exploration and development in difficult and deep-water areas. ROVs, controlled remotely from the surface, are highly maneuverable and equipped with advanced imaging and sensor technologies, providing:

- **High-resolution video and still imagery**
- **Subsea mapping and measurements**
- **Condition monitoring of subsea assets**

We have different kinds of ROVs in our fleet

Observational class ROVs

Observational class ROVs have cameras with recording possibilities. They can transmit real-time visuals from underwater. They are used for seabed surveys and inspections; they are the 'eyes and hands' underwater.

Work class ROVs:

Work class ROVs are, as the name suggests, designed to complete various tasks. They have multiple robotic arms to perform tasks such as lifting actions or repairing underwater equipment. Normally, they are powered hydraulically or electrically.

Laboratory and Geotechnical Data Delivery



Laboratory testing and data delivery are essential to planning any successful construction or environmental action. With our network of laboratory facilities, we provide complete support for offshore projects. All our laboratories are accredited, offering advanced and routine testing services to deliver specialist insights when you need them.

Complete Testing Services

Our accredited geotechnical laboratory testing services ensure precision and reliability. Key offerings include:

- **Soil and Rock Testing:** Extensive analysis of physical and mechanical properties.
- **Soil Mechanics Testing:** Insights into soil behavior under various conditions.
- **Structural Material Testing:** Evaluation of construction materials for durability and performance.
- **Environmental Testing:** Assessments to ensure environmental compliance and sustainability.



Geotechnical Data Delivery

Our geotechnical documentation is designed to provide accurate and up-to-date information in a transparent manner through advanced digital platforms.

- **Ease of access:** Project managers can interact with workflows efficiently.
- **Extensive Data Management:** Helps clients organize, interpret, and use extensive geotechnical data for effective project planning and monitoring.
- **Tailored solutions:** Tailored data analysis and reporting to meet your project's unique needs.

End-to-end support

From testing to final data analysis, we help with project execution in all phases.

Key benefits include:

- **Expert consultancy:** Guidance and support from experienced geotechnical engineers.
- **Certified results:** Accredited tests ensure data quality and reliability.
- **Data-driven decision-making:** A robust analysis that helps you make fast and informed project decisions.

Our geotechnical consulting and data delivery services provide the tools and insights you need to succeed.

Vessels; DP2, Jack-Up & Daughter Craft



Geotechnical DP2 Vessel

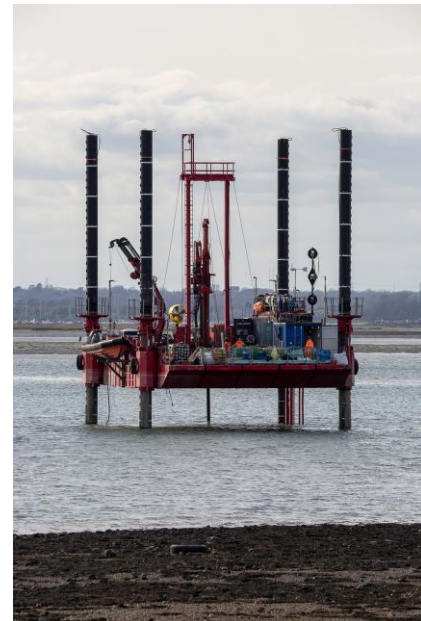
We can charter vessels scaled to specific projects and thus tailor the solutions to particular customer needs.



Shallow Draft Survey Vessel



Geophysical Survey vessel



Shallow Water Geotechnical Jack-Up

Vessels

NDE Offshore has several long-term contracts with ocean-going vessels designed for offshore geophysical, ROV, hydrographic, and geotechnical surveys. With the support of these vessels, NDE Offshore can provide efficient, flexible solutions for diverse marine survey needs.

For nearshore operations, NDE Offshore utilizes self-elevating platforms (SEPs) for geotechnical surveys and shallow-sea survey boats customized for hydrographic and geophysical surveys in coastal waters.

When additional capacity is needed, NDE Offshore can mobilize offshore geotechnical drilling rigs on DP2-class vessels through charter agreements.

NDE Offshore provides complete geophysical, hydrographic, environmental, and ROV survey equipment solutions for swift deployment on chartered or customer-provided vessels.

Examples Of Some Key Projects We Have Accomplished

HILONG 2023



WORK DESCRIPTION: ROV Pipelay touch-down monitoring, SAT diving for Spool installation, Riser Clamp replacement, Riser installation and J-Tube installation, ROV as-lay inspection.

- Project management, planning, and execution of projects.
- Purchase and sourcing of material and equipment.
- SAT Diving, installation.
- ROV Inspection & Survey.
- Pipe Lay Support.

Type of work:	Pre-Con & Touchdown Survey
Period:	Sept 2023 – April 2024
Location:	Marjan Field, KSA
Field:	MRJN 690 and 26

NORDSEE ONE 2021



WORK DESCRIPTION: Periodic subsea inspection and survey

- ROV inspection of wind turbine substructure and OSS
- Multibeam scour survey of cable routes and around subsea foundations
- Side Scan debris survey

Type of work:	ROV, Periodic subsea inspection and survey
Period:	May 2021
Location:	North Sea, German Sector
Windfarm:	Nordsee One
Vessel:	Patriot, Glomar Vantage

Examples Of Some Key Projects We Have Accomplished

SAIPEM 2019-2021



WORK DESCRIPTION: Activities relating to the installation of pipeline 2019:

- Geophysical and geotechnical survey of proposed pipeline and jacket installation locations.
- As-laid and as-built survey of installed pipeline utilizing WROV
- Pre-commissioning support
- Jacket walk to work operations

Type of work:	ROV, Geophysical / Geotechnical Survey, Pre-commissioning, As-built Survey
Period:	October 2019 – April 2021
Location:	Barzan Field, Qatar
Platform:	AOS Neptune

NORDSEE ONE 2018



WORK DESCRIPTION: Periodic subsea inspection and survey:

- Project management and planning
- ROV inspection of wind turbine substructure and OSS
- Multibeam scour survey of cable routes and around subsea foundations
- Side Scan debris survey

Type of work:	ROV
Period:	April – May & August 2018
Location:	North Sea, German Sector
Windfarm:	Nordsee One
Vessel:	Mintis, Glomar Wave

Quality Assurance



IRATA

NDE Offshore is a member of IRATA, International Rope Access Trade Association to perform:

- Inspection
- Construction
- Corrosion Protection
- Jacket Construction
- Installations
- Steel Works
- NDT Works & Safety



IMCA

NDE Offshore is a permanent member of IMCA for Europe & Africa as well as the Middle East & India for the following;

- Diving
- Offshore Survey
- Remote Systems & ROV & Safety



DNV-GL

NDE Offshore is certified by DNV-GL according to

ISO 9001 (Quality)
ISO 14001 (Environment)
ISO 45001 (Occupational Health & Safety)




ABS

NDE Offshore is certified by ABS for the following services:

- In-water survey
- Non-destructive inspection
- Remote inspection techniques as an alternative means for close-up survey of ships and mobile offshore units

Certificates



This is to certify that
NDE Offshore MEA DMCC
 804 Tiffany Towers, Cluster VI, Jumeirah Lake Towers,
 Dubai, United Arab Emirates

Membership No.: 7133/O

is a
**PROBATIONARY MEMBER
 (OPERATOR)**

of IRATA International and complies with the regulatory requirements and
 applicable policies of IRATA International
 Membership validity should be verified at www.irata.org

Signature
Dr S Kondaveeti
 Chief Executive Officer

Originally Registered: 02 December 2022
 Last Certification Date: 02 September 2024
 Certification Expiry: 01 September 2025

The certificate shows the holder's ability to perform work as stated by the provisions of the standards of IRATA International and is not a guarantee of performance. It is not a license to work. It is a statement of competence. It is not a license to work. It is a statement of competence. It is not a license to work. It is a statement of competence.

CERTIFICATE OF MEMBERSHIP

**NDE Offshore Oil and Gas
 Services LLC**

IS A CONTRACTOR MEMBER OF




International Marine Contractors Association

MEMBERSHIP
 DIVING, OFFSHORE SURVEY AND REMOTE SYSTEMS & ROV

SURFACE-SUPPLIED DIVING ONLY
 IN THE FOLLOWING REGIONS
 MIDDLE EAST & INDIA

Signature
Jonathan Tame
 IMCA President 2022-24

THIS CERTIFICATE IS VALID UNTIL
31 DECEMBER 2024



Through your membership of IMCA you confirm you will comply with IMCA's code of ethics, regulations and standards for the safety of personnel and the environment. IMCA is not responsible for the actions of its members. It is a statement of competence. It is not a license to work. It is a statement of competence. It is not a license to work. It is a statement of competence.



**MANAGEMENT SYSTEM
 CERTIFICATE**

Certificate No.: 1375000 Issue/validity date: 17 March 2024 Valid: 09 March 2024 - 11 February 2026

This is to certify that the management system of
NDE MEA DMCC
 804 Tiffany Towers, Cluster VI, Jumeirah Lakes Towers, Dubai, United Arab Emirates
 and the sites as mentioned in the appendix accompanying this certificate

has been found to conform to the Quality Management System standard:
ISO 9001:2015

This certificate is valid for the following scope:
 The provision of Subsea and topside offshore activities including; installation, inspection,
 repair and maintenance services using Diving, Remotely Operated Vehicles, Rope Access,
 Unmanned Aerial Vehicle (UAV) and related techniques. The provision of Geophysical and
 Geotechnical Investigations, equipment hire and project procurements.

DNV is not responsible for the actions of its members. It is a statement of competence. It is not a license to work. It is a statement of competence. It is not a license to work. It is a statement of competence.




**MANAGEMENT SYSTEM
 CERTIFICATE**

Certificate No.: 1375000 Issue/validity date: 17 March 2024 Valid: 09 March 2024 - 11 February 2026

This is to certify that the management system of
NDE MEA DMCC
 804 Tiffany Towers, Cluster VI, Jumeirah Lakes Towers, Dubai, United Arab Emirates
 and the sites as mentioned in the appendix accompanying this certificate

has been found to conform to the Environmental Management System standard:
ISO 14001:2015

This certificate is valid for the following scope:
 The provision of Subsea and topside offshore activities including; installation, inspection,
 repair and maintenance services using Diving, Remotely Operated Vehicles, Rope Access,
 Unmanned Aerial Vehicle (UAV) and related techniques. The provision of Geophysical and
 Geotechnical Investigations, equipment hire and project procurements.

DNV is not responsible for the actions of its members. It is a statement of competence. It is not a license to work. It is a statement of competence. It is not a license to work. It is a statement of competence.




**MANAGEMENT SYSTEM
 CERTIFICATE**

Certificate No.: 1375000 Issue/validity date: 17 March 2024 Valid: 09 March 2024 - 11 February 2026

This is to certify that the management system of
NDE MEA DMCC
 804 Tiffany Towers, Cluster VI, Jumeirah Lakes Towers, Dubai, United Arab Emirates
 and the sites as mentioned in the appendix accompanying this certificate

has been found to conform to the Occupational Health and Safety Management System standard:
ISO 45001:2018

This certificate is valid for the following scope:
 The provision of Subsea and topside offshore activities including; installation, inspection,
 repair and maintenance services using Diving, Remotely Operated Vehicles, Rope Access,
 Unmanned Aerial Vehicle (UAV) and related techniques. The provision of Geophysical and
 Geotechnical Investigations, equipment hire and project procurements.

DNV is not responsible for the actions of its members. It is a statement of competence. It is not a license to work. It is a statement of competence. It is not a license to work. It is a statement of competence.



Certificates



Certificate Number **25-4881882-B**
 Issue Date 03 March 2025
 Expiry Date 04 March 2026
 ABS Port Office Dubai Office
 Company's Website www.ndeoffshore.com

**CERTIFICATE OF
Recognized Service Supplier**

This is to certify that

NDE OFFSHORE MEA DMCC
located at
**OFFICE NO 804, TIFFANY TOWER, CLUSTER W, JUMEIRAH LAKE
TOWERS, DUBAI, United Arab Emirates**

having been audited by ABS and is issued a **one-year provisional approval** pending a satisfactory practical demonstration and reporting of the service listed below:

Non-Destructive Inspection

Attached Certificate Appendix provides specific scope of approval, authorized personnel, manufacturer authorizations and subcontractors.

It is the responsibility of the Service Supplier to employ, train and qualify persons in the service provided. If the service requires approval from manufacturers, the Service Supplier is responsible to maintain contact with the manufacturer and maintain any service manuals up to date. Where required by the category of service, the Service Supplier shall provide valid evidence that it is authorized or licensed by the equipment manufacturer to service the particular makes and models of equipment for which approval is sought. If approval from the manufacturer is not attained, a surveyor must be present at time of survey to continue work. Alternatively, current written instructions from the flag state are to be obtained to continue work without the surveyor present. Service technicians must present photo identification, evidence of authorizations from manufacturers, as applicable, at the time of service.

The ABS office issuing this certificate is to be kept updated with changes to the management of the company, its employees, equipment and models on the authorization list and any changes made.


 Mohamed Aari Bin Matnor, Surveyor

CLS-SFM-0106 Rev.6

Page 1 of 4



Certificate Number **25-4881882-A**
 Issue Date 03 March 2025
 Expiry Date 04 March 2026
 ABS Port Office Dubai Office
 Company's Website www.ndeoffshore.com

**CERTIFICATE OF
Recognized Service Supplier**

This is to certify that

NDE OFFSHORE MEA DMCC
located at
**OFFICE NO 804, TIFFANY TOWER, CLUSTER W, JUMEIRAH LAKE
TOWERS, DUBAI, United Arab Emirates**

having been audited by ABS and is issued a **one-year provisional approval** pending a satisfactory practical demonstration and reporting of the service listed below:

In-Water Survey

Attached Certificate Appendix provides specific scope of approval, authorized personnel, manufacturer authorizations and subcontractors.

It is the responsibility of the Service Supplier to employ, train and qualify persons in the service provided. If the service requires approval from manufacturers, the Service Supplier is responsible to maintain contact with the manufacturer and maintain any service manuals up to date. Where required by the category of service, the Service Supplier shall provide valid evidence that it is authorized or licensed by the equipment manufacturer to service the particular makes and models of equipment for which approval is sought. If approval from the manufacturer is not attained, a surveyor must be present at time of survey to continue work. Alternatively, current written instructions from the flag state are to be obtained to continue work without the surveyor present. Service technicians must present photo identification, evidence of authorizations from manufacturers, as applicable, at the time of service.

The ABS office issuing this certificate is to be kept updated with changes to the management of the company, its employees, equipment and models on the authorization list and any changes made.


 Mohamed Aari Bin Matnor, Surveyor

CLS-SFM-0106 Rev.6

Page 1 of 4



Certificate Number **25-4881882-C**
 Issue Date 05 March 2025
 Expiry Date 04 March 2026
 ABS Port Office Dubai Office
 Company's Website www.ndeoffshore.com

**CERTIFICATE OF
Recognized Service Supplier**

This is to certify that

NDE OFFSHORE MEA DMCC
located at
**OFFICE NO 804, TIFFANY TOWER, CLUSTER W, JUMEIRAH LAKE
TOWERS, DUBAI, United Arab Emirates**

having been audited by ABS and is issued a **one-year provisional approval** pending a satisfactory practical demonstration and reporting of the service listed below:

**Remote Inspection Techniques as An Alternative Means for Close-up
Survey of Ships and Mobile Offshore Units**

Attached Certificate Appendix provides specific scope of approval, authorized personnel, manufacturer authorizations and subcontractors.

It is the responsibility of the Service Supplier to employ, train and qualify persons in the service provided. If the service requires approval from manufacturers, the Service Supplier is responsible to maintain contact with the manufacturer and maintain any service manuals up to date. Where required by the category of service, the Service Supplier shall provide valid evidence that it is authorized or licensed by the equipment manufacturer to service the particular makes and models of equipment for which approval is sought. If approval from the manufacturer is not attained, a surveyor must be present at time of survey to continue work. Alternatively, current written instructions from the flag state are to be obtained to continue work without the surveyor present. Service technicians must present photo identification, evidence of authorizations from manufacturers, as applicable, at the time of service.

The ABS office issuing this certificate is to be kept updated with changes to the management of the company, its employees, equipment and models on the authorization list and any changes made.


 Mohamed Aari Bin Matnor, Surveyor

CLS-SFM-0106 Rev.6

Page 1 of 4

NDE Offshore is Registered Supplier & Service Provider for:



SIEMENS



Why choose us for survey services?

NDE Offshore: Expertise in Offshore Solutions

With over 20 years in offshore operations, NDE Offshore offers unparalleled expertise. Our extensive background in different offshore survey techniques allows us to provide safe, secure, and accurate solutions tailored to offshore assets.

We take full responsibility for the lifecycle management of your assets, from planning and installation to ongoing maintenance and decommissioning. Our commitment to safety, efficiency, and reliability has built long-term partnerships with our clients, who return to us year after year, trusting us with their operations. At NDE Offshore, we're not just a service provider; we are a long-term partner committed to your assets



Examples of Our Survey Services:

- Multibeam Echo Sounder Survey (MBES)
- Side Scan Sonar Survey (SSS)
- Seabed Survey
- Geophysical Survey
- Geotechnical Survey
 - Core sampling
 - 3D ground modeling
 - Cone penetration tests
 - Mechanical drillings
 - Alignment-specific deep-water, nearshore, geotechnical investigations
 - Geologic mapping
- Route and Site Survey
- Pre and Post-Lay Survey
- Offshore and Nearshore Survey
- Photogrammetry Survey
- ROV Surveys and inspections
- Laboratory
 - Laboratory Testing
 - Geotechnical Data Delivery
 - Soil and Rock Testing
 - Soil Mechanics Testing
 - Structural Material Testing
 - Environmental Testing

We also assign our specialized personnel, either individually or as teams, to manage specific, non-routine tasks and projects. These include major modifications, asset restorations, and other complex assignments.



Contact Us

NDE Offshore Dubai

Contact us

NDE Offshore
804 Tiffany Tower, Cluster W,
JLT, Dubai,
United Arab Emirates

Email

Info@ndeoffshore.com
www.ndeoffshore.com

NDE Offshore Abu Dhabi

Contact us

NDE Offshore Oil and Gas
Services LLC, Musaffah,
M39,12, Abu Dhabi City,
United Arab Emirates

Email

Info@ndeoffshore.com
www.ndeoffshore.com

NDE Offshore KSA

Contact us

NDE Offshore KSA - Al-Fahes
Marine Consulting Company
Alghashlah Dist., Dhahran- 34232
Kingdom of Saudi Arabia

Email

admin@ndeoffshore.com
www.ndeoffshore.com

